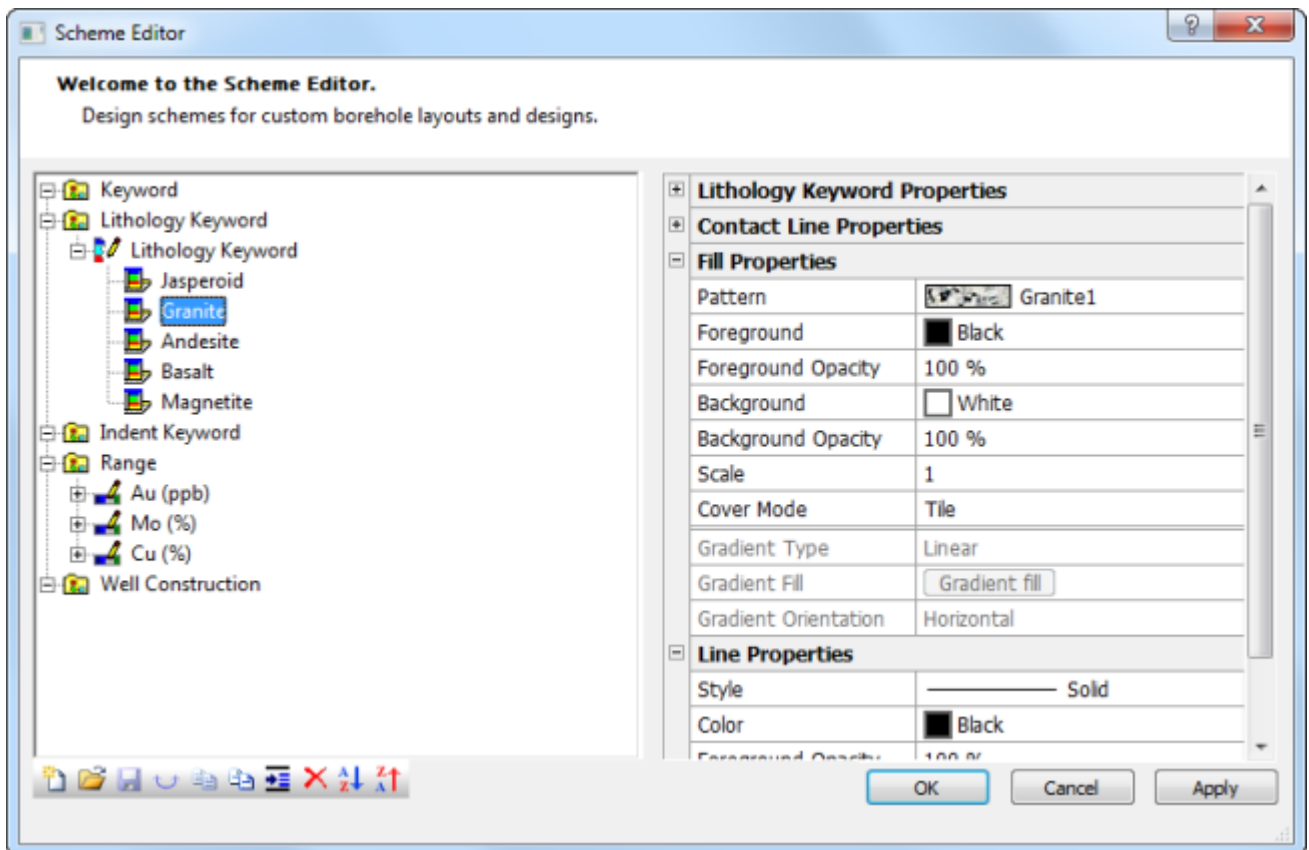


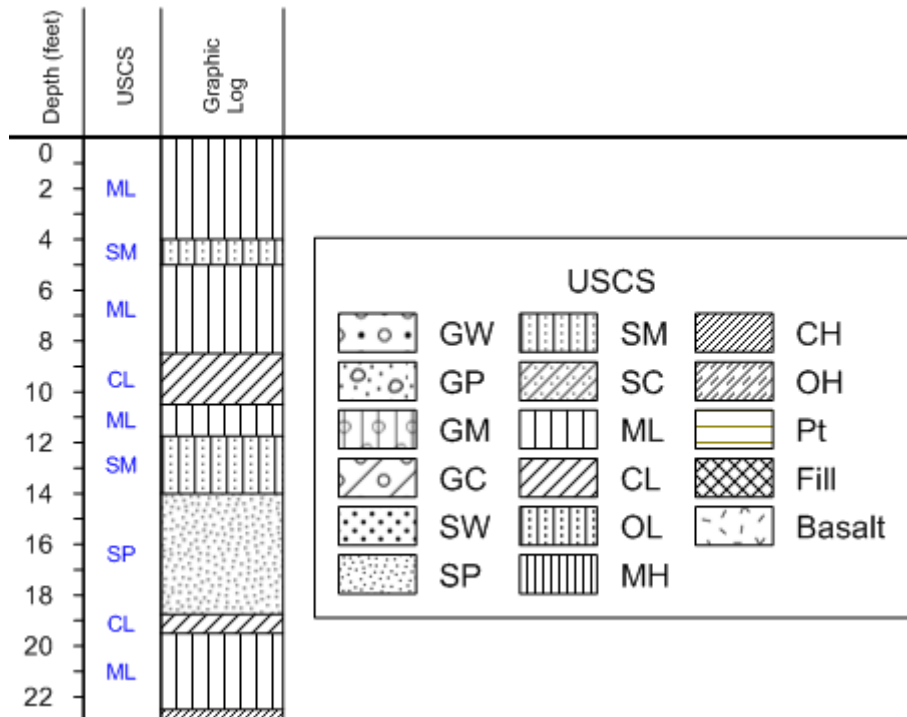
Feature - Schemes

Schemes provide a way to load drawing properties based on a keyword or range value defined in the imported data. For example, a lithology log uses a lithology keyword scheme. The lithology keyword scheme contains keywords, such as granite, clay, etc. Each of these keywords is assigned a fill pattern, contact line properties, line properties, and text properties.

Schemes can be reused; therefore, you do not have to go through the time-consuming process of assigning the same properties each time you create a new borehole design, map or cross section. Reusing scheme files is ideal for those who want to continue making borehole designs, maps and cross sections that look the same for a wide variety of borehole data. Use one of the predefined scheme files included with Strater, or create your own.



The Scheme Editor is where you link specific range values or keywords to display properties. In the example above, the lithology keyword "Granite" is tied to a granite fill pattern and other specific display properties. When the scheme is assigned to a lithology log, every time the word "Granite" is used, Strater uses the properties assigned in the scheme in the graphical borehole display.



Use the USCS scheme file provided with Strater to define the fill patterns for your logs.